



# Proportional solenoid valve 2/2 way N.C. - Direct acting

5204KCV55

### PRESENTATION:

Solenoid valve designed for a fluid output proportional to voltage change.  
 Minimum operational pressure is not required.  
 Mounting in any position.  
 Material used and tests carried out ensure reliability and long life time.

### TECHNICAL FEATURES:

Max. allowable pressure (PS) 40 bar  
 Ambient temperature:  
 See coils catalogue page for its compatibility.  
 Proportional response features:

Hysteresis	< 5%
Repeatability	< 3%
Sensitivity	< 2%

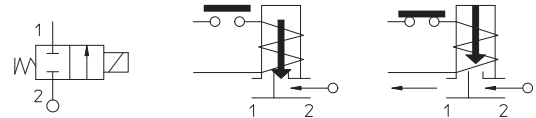
Tensions range: 0-24 VDC  
 24 VDC impulse range modulation (600 ÷ 800 Hz),  
 (see general information:proportional S.V. operation).  
 These solenoid valves are not suitable for stagnating fluids, or for fluids that being subject to evaporation may deposit solid, calcareous or similar residues.



PIPES: G 1/4

COILS: 12W - Ø 13  
 UDA 155°C (class F)

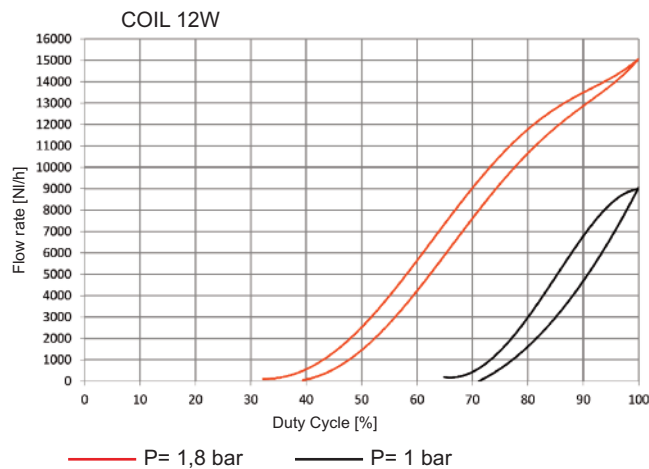
**COIL HOUSING AND COIL FORMER MATERIAL ARE MADE BY 100% VIRGIN MATERIAL.**



Gaskets	Temperature		Medium
V=FKM (fluoroelastomer)	- 10°C	+140°C	Water, inert gas, mineral oils (3°E), gasoline

Pipe ISO 228/1	Code	Max viscosity		Ø mm	Kv l/mn	Power watt	Pressure		
		cSt	°E				min	M.O.P.D.	
							bar	AC bar	DC bar
G 1/4	5204KCV55	21	~ 3	5,5	9	12	0	-	1,8

SOLENOID VALVE CALIBRATED AT 1,8 bar - Flow rate in air



### Note

Also available with brass body without lead | Available on request and with minimum quantities.

The "ODE" reserves the right to carry out technical and aesthetic modifications without prior notice.

**MATERIALS:**

<b>Body</b>	Stainless steel AISI 316
<b>Armature tube</b>	Stainless steel AISI series 300
<b>Fixed core</b>	Stainless steel AISI series 400
<b>Plunger</b>	Stainless steel AISI series 400
<b>Spring</b>	Stainless steel AISI series 300
<b>Ring guide</b>	PTFE
<b>Orifice</b>	Stainless steel AISI 316
<b>Seal</b>	V=FKM
<b>Gasket</b>	V=FKM

**On request:**

<b>Connector</b>	Pg 9 or Pg 11
<b>Connector conformity</b>	ISO 4400

**FEATURES:**

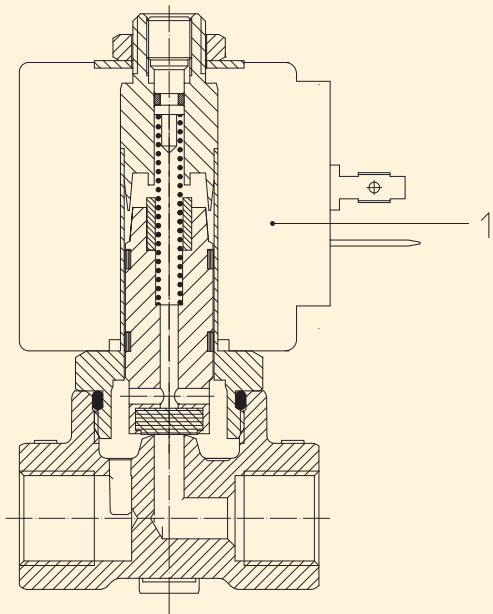
<b>Electrical conformity</b>	IEC 335
<b>Protection degree</b>	IP 65 EN 60529 (DIN 40050) with coil fitted by connector.

**SPARE PARTS:**

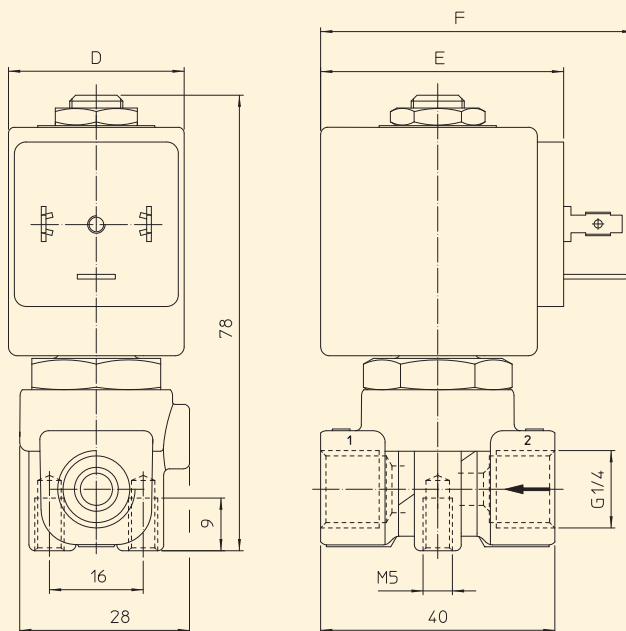
- 1. Coil:  
See coils list

**KIT:**

KT130KCV55-I



**DIMENSIONS:**



COIL TYPE	POWER ABSORPTION	DIMENSIONS		
	W ---	D mm	E mm	F mm
U	12	36	48	60